

Videojet® 4210

Ink Jet Addressing System

Ink Jet.

Laser.

Thermal Transfer.

Labelers.

Track & Trace.

Supplies.

Parts & Service.



The Videojet® 4210 addressing system with highly reliable ink jet technology lets you print variable data on nearly any surface.

Reliable ink jet technology with solvent- and water-based inks

- Typical throughput of 20,000 pieces per hour
- Excellent choice for newspapers running Total Market Coverage (TMC) applications
- Print any combination of fixed text, variable text, numbering (up to 4 independent counters), select barcodes and multiple date/time formats
- Up to (6) lines of print from a single printer utilizing (2) printheads; system can be expanded to include up to (4) printers for a total of (24) lines of print
- Versatility to print down, sideways or upside down as well as up to (1) inch away from the media
- Complete line of inks and fluids to print on a variety of coated substrates, including polywrap

Windows®-based front end with WYSIWYG software

- Simplified setup and operation with network retrieval of data files
- Intelligent Mail® Barcode support
- PDF proofing supported

Intelligent stacker control available

- Take advantage of postal discounts by optimizing bundle sizes based on user-definable settings
- Selectable desired stack size, minimum stack size and compensate settings
- Supports most common digital I/O controlled stackers

Drop-in replacement for Cheshire 4000

- Simple upgrade path
- Leverage investment with existing Videojet 270g ink jet printers



PC Controller

2.8GHz Pentium Hewlett-Packard PC with keyboard and optical mouse;
15" (38 cm) HP flat screen monitor

Printhead/Cable

Compact stainless steel 1 3/8" (35 mm) diameter printhead. Two per each printer. Omni-directional capability. Vinyl covered armored conduit in 20' (6.1 m) length

Language Versions

English

Character Fonts

10 standard fonts

Character Set

Code Page 850 extended ASCII subset

Font Matrix Configuration

5x5, 5x7, 7x9, 9x9, 10x16, 16x24 single line; 5x7 and 5x7 with 10x16 twin line; 5x7 with 16x24 tri-line

Bar Code Fonts

Interleaved 2 of 5; Code 39; POSTNET™, Intelligent Mail® Barcode

Print Rate

Up to 60,000 documents per hour, depending on size of media, number of lines and character pitch

Message Length

Up to 500 characters per line, including spaces; up to 24 lines of information with the full system configuration

Supported File Types

Directly Imported: Excel spreadsheet with no formatting (.xls), MS Access database (.mdb), Dbase (.dbf), Comma delimited (.txt). With converter tool: Text1 (.tex), Text2 (.tx2), JS2 (.js2)

With Optional Converter: Fixed width fields CR/LF record, Fixed width fields fixed width record, Tab delimited, Any record delimiters and MS Excel

Air Requirements

2.0 SCFM at 80 PSI (5.4 bars) per printer; clean, dry, instrument quality air

Electrical Requirements

Nominal 120 or 240 VAC at 50/60 Hz, 75 watts (printer)

Environmental

Operating temperature: 40° F to 110° F (5° C - 43° C)
Humidity range: 15% - 90% RH non-condensing

Enhancements

Stacker control and overhead umbilical stand

Inks

Supported by a full range of Videojet inks and supplies, including formulations that meet US Postal Service POSTNET and IMB specifications

Solvent- and water-based inks available

External Cables

Printer Serial data cable (RS232) DB-25M (2,3,7 pinout), 1 per printhead

Printer Tach/Cue (RJ11), 6 wire 2 outputs 1 input opto isolated, 1 per printhead

Base Control (DB15, Encoder, Photo eye input, Base stop relay)

Base I/O (DB-37), 5V ACT series inputs/outputs

Internal Cables

LAN, utp, RJ45

DC Power (5,12, 24V) MolexDualRow-6

RS232 (DB-9)

LightPole MolexInline-6

Cabinet Dimensions

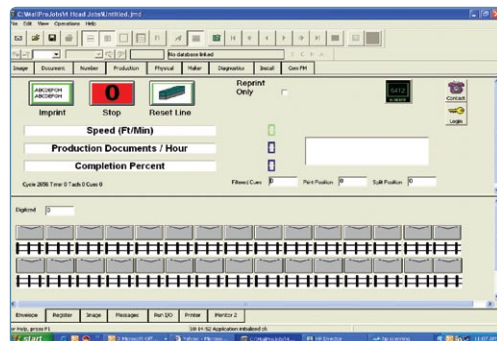
39" x 24" x 31" (99.1 x 61.0 x 78.7 cm)

Approximate Weight

PC controller cabinet, 66lbs (30 kg); expected total system configuration, approximately 100 lbs (45.4 kg)



CERTIFIED
ISO 9001
DOCUMENTED QUALITY



800-843-3610

www.videojet.com / info@videojet.com

Videojet Technologies Inc. / 1500 Mittel Blvd.

Wood Dale IL 60191-1073 / USA

Phone 630-860-7300 Fax 630-616-3623

